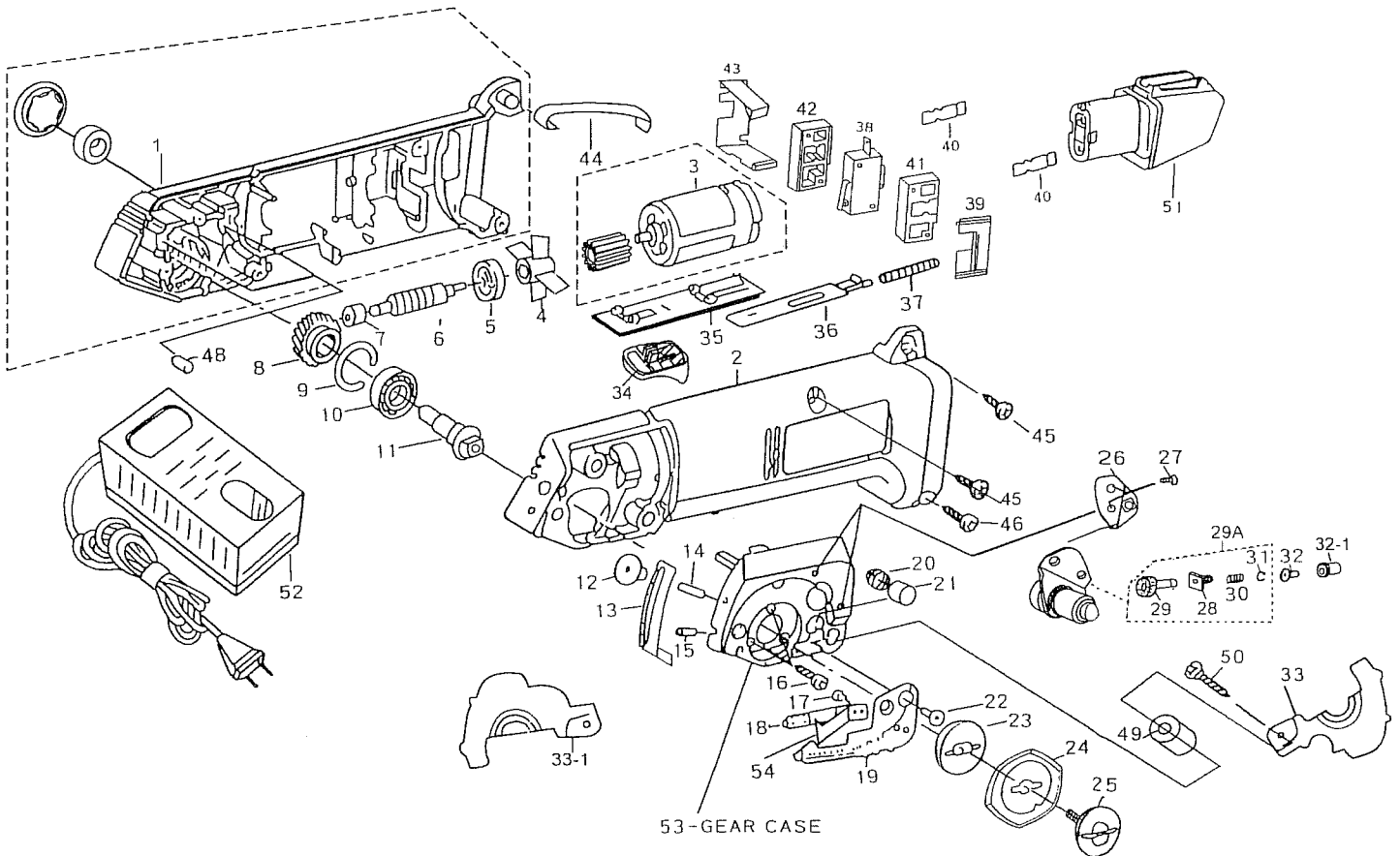


MB-60

Cordless Electric shear



PART NO.	QTY	DESCRIPTION	PART NO.	QTY	DESCRIPTION
MB-60-01	1	RIGHT HOUSING	MB-60-29	1	STONE
MB-60-02	1	LEFT HOUSING	MB-60-29A		STONE ASSY
MB-60-03	1	MOTOR	MB-60-30	1	SPRING
MB-60-04	1	MOTOR FAN	MB-60-31	1	RING
MB-60-05	1	BALL BEARING	MB-60-32	1	PUSH KNOB FOR STONE
MB-60-06	1	WORM GEAR	MB-60-32-1	1	SLEEVE FOR 29A
MB-60-07	1	BUSHING	MB-60-33	1	KNIFE GUARD
MB-60-08	1	HELIX GEAR	MB-60-33-1	1	KNIFE GUARD
MB-60-09	1	RETAINING RING	MB-60-34	1	ON-OFF HANDLE
MB-60-10	1	BALL BEARING	MB-60-35	1	SWITCH HOUSING
MB-60-11	1	GEAR SHAFT	MB-60-36	1	SLIDE
MB-60-12	1	NUT	MB-60-37	1	SPRING
MB-60-13	1	FINGER GUARD	MB-60-38	1	MICRO SWITCH
MB-60-14	1	SCREW	MB-60-39	1	SWITCH HOLDER
MB-60-15	1	SCREW	MB-60-40	2	SWITCH SLIDE
MB-60-16	2	SCREW	MB-60-41	1	L.SWITCH CLIP
MB-60-17	2	SCREW	MB-60-42	1	R.SWITCH CLIP
MB-60-18	1	CUTTING BLADE W/ CARBIDE	MB-60-43	1	SWITCH HOLDER
MB-60-19	1	LEG	MB-60-44	1	BATTERY CLAMPING
MB-60-20	1	SPRING	MB-60-45	2	SCREW
MB-60-21	1	OIL FELT	MB-60-46	1	SCREW
MB-60-22	2	SCREW	MB-60-48	1	STOPPER
MB-60-23	1	HELIX GEAR SUPPORT	MB-60-49	1	KNIFE GUARD SOCKET
MB-60-24	1	10 SIDED KNIFE	MB-60-50	1	KNIFE LOCK SCREW
MB-60-25	1	KNIFE LOCK SCREW	MB-60-51	1	BATTERY 9.6V
MB-60-26	1	SHARPENER HOLDER	MB-60-52	1	BATTERY CHARGER
MB-60-27	1	SCREW	MB-60-53	1	GEAR CASE
MB-60-28	1	SQUARE SLEEVE FOR STONE	MB-60-54	1	GUIDE PLATE

※MB-60-33-1 OPTIONAL FOR WITHOUT STONE

07-12-20X1000